

Courtesy Of Brian C Cyr Of RE/MAX Elite

\$549,900 - 50 Morgan Crescent, St. Albert

MLS® #E4454128

\$549,900

4 Bedroom, 2.50 Bathroom, 1,298 sqft
Single Family on 0.00 Acres

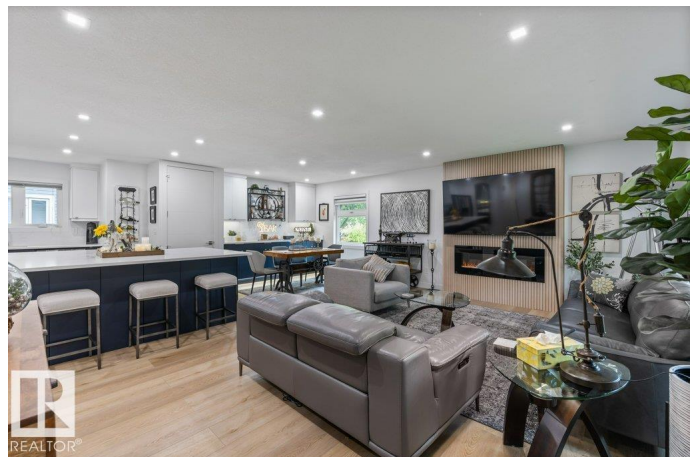
Mission (St. Albert), St. Albert, AB

Discover the charm of Mission in St. Albert—a mature, family-friendly community. This beautifully renovated bungalow offers one of the largest floor plans in the area, with over 2,450 sq ft of total living space. Recent upgrades include vinyl plank flooring, triple-pane windows, updated roof, hot water tank, insulation, blinds, fence, and concrete work. The stunning kitchen features two-tone cabinetry, stainless steel appliances, and a spacious eat-up island. The cozy living room boasts a floor-to-ceiling wood feature wall with an electric fireplace. With 3 bedrooms and 2 full bathrooms on the main floor, including a stylish ensuite with dual sinks and a glass shower, there's space for the whole family. The fully finished basement offers a fourth bedroom, large rec room, 2-piece bath, and an incredible sauna. Situated on a desirable corner lot, this home also includes a heated oversized double garage, connected by a convenient breezeway.

Built in 1973

Essential Information

MLS® #	E4454128
Price	\$549,900
Bedrooms	4
Bathrooms	2.50



Full Baths	2
Half Baths	1
Square Footage	1,298
Acres	0.00
Year Built	1973
Type	Single Family
Sub-Type	Detached Single Family
Style	Bungalow
Status	Active

Community Information

Address	50 Morgan Crescent
Area	St. Albert
Subdivision	Mission (St. Albert)
City	St. Albert
County	ALBERTA
Province	AB
Postal Code	T8N 2E4

Amenities

Amenities	See Remarks
Parking	Double Garage Detached

Interior

Interior Features	ensuite bathroom
Appliances	Dishwasher-Built-In, Dryer, Garage Control, Garage Opener, Microwave Hood Fan, Refrigerator, Stove-Electric, Washer, Window Coverings, Garage Heater
Heating	Forced Air-1, Natural Gas
Fireplace	Yes
Fireplaces	Insert
Stories	2
Has Basement	Yes
Basement	Full, Finished

Exterior

Exterior	Wood, Brick, Vinyl
Exterior Features	Corner Lot, Fenced, Landscaped, Playground Nearby, Public Transportation, Schools, Shopping Nearby

Roof	Asphalt Shingles
Construction	Wood, Brick, Vinyl
Foundation	Concrete Perimeter

Additional Information

Date Listed	August 21st, 2025
Days on Market	29
Zoning	Zone 24

DATA IS DEEMED RELIABLE BUT IS NOT GUARANTEED ACCURATE BY THE REALTORS® ASSOCIATION OF EDMONTON. COPYRIGHT 2025 BY THE REALTORS® ASSOCIATION OF EDMONTON. ALL RIGHTS RESERVED. Trademarks are owned or controlled by the Canadian Real Estate Association (CREA) and identify real estate professionals who are members of CREA (REALTOR®, REALTORS®) and/or the quality of services they provide (MLS®, Multiple Listing Service®)

Listing information last updated on September 19th, 2025 at 1:47am MDT