

## \$834,900 - 11 Edgewater Terr, St. Albert

MLS® #E4446272

**\$834,900**

5 Bedroom, 3.50 Bathroom, 2,394 sqft

Single Family on 0.00 Acres

Erin Ridge North, St. Albert, AB

Visit the Listing Brokerage (and/or listing REALTOR®) website to obtain additional information. WALKOUT BACKING ONTO POND | SOUTH-FACING | 5 BED + DEN + BONUS Walkout estate home built by Parkwood homes in Erin Ridge North backing a peaceful pond and green space with incredible south-facing views. This 2,394 sq ft two-storey with finished walkout basement features exotic hardwood, front sitting room, main floor den, open living/dining with gas fireplace, quartz kitchen counters, large pantry, and stainless-steel fridge (2023). Sunny upper deck with gas BBQ hookup and hot/cold taps. Upstairs: bonus room, laundry with sink, 2 bedrooms, and bright master bedroom with pond views, walk-in, and 5-piece ensuite. Walkout basement: 2 beds, full bath, rec room, and patio to landscaped yard with private gate. Heated oversized garage, A/C, Hunter Douglas blinds, new HWT (2024), and approx. 3,500 sq ft of total living space. Steps to trails, parks, and schools.

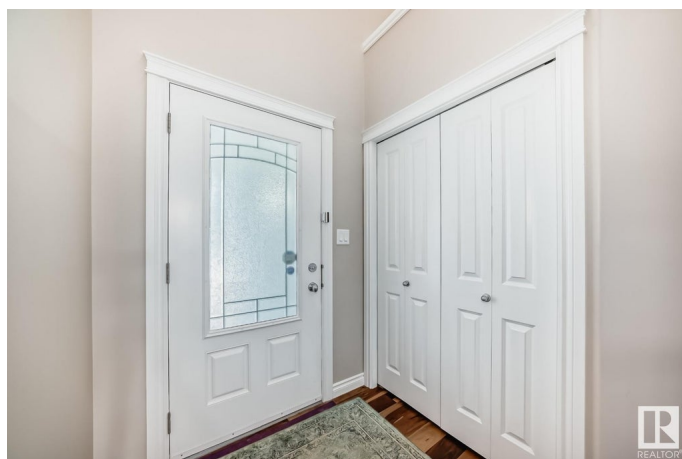
Built in 2013

### Essential Information

MLS® # E4446272

Price \$834,900

Bedrooms 5



Bathrooms	3.50
Full Baths	3
Half Baths	1
Square Footage	2,394
Acres	0.00
Year Built	2013
Type	Single Family
Sub-Type	Detached Single Family
Style	2 Storey
Status	Active

### Community Information

Address	11 Edgewater Terr
Area	St. Albert
Subdivision	Erin Ridge North
City	St. Albert
County	ALBERTA
Province	AB
Postal Code	T8N 4G5

### Amenities

Amenities	Air Conditioner, Carbon Monoxide Detectors, Ceiling 10 ft., Deck, Detectors Smoke, Front Porch, No Smoking Home, Patio, Walkout Basement
Parking	Double Garage Attached
Is Waterfront	Yes

### Interior

Interior Features	ensuite bathroom
Appliances	Dishwasher-Built-In, Dryer, Refrigerator, Stove-Electric, Washer, See Remarks
Heating	Forced Air-2, Natural Gas
Fireplace	Yes
Fireplaces	Heatilator/Fan, Remote Control, Tile Surround
Stories	3
Has Basement	Yes
Basement	Full, Finished

### Exterior

Exterior	Wood, Hardie Board Siding
Exterior Features	Backs Onto Lake, Backs Onto Park/Trees, Fenced, Landscaped, Playground Nearby, Public Transportation, Schools, Shopping Nearby, View Lake
Roof	Asphalt Shingles
Construction	Wood, Hardie Board Siding
Foundation	Concrete Perimeter

**Additional Information**

Date Listed	July 4th, 2025
Days on Market	11
Zoning	Zone 24

DATA IS DEEMED RELIABLE BUT IS NOT GUARANTEED ACCURATE BY THE REALTORS® ASSOCIATION OF EDMONTON. COPYRIGHT 2025 BY THE REALTORS® ASSOCIATION OF EDMONTON. ALL RIGHTS RESERVED.Trademarks are owned or controlled by the Canadian Real Estate Association (CREA) and identify real estate professionals who are members of CREA (REALTOR®, REALTORS®) and/or the quality of services they provide (MLS®, Multiple Listing Service®)

Listing information last updated on July 15th, 2025 at 7:47pm MDT