

Courtesy Of Stephen M Jones Of RE/MAX River City

\$94,900 - 805 9028 Jasper Avenue, Edmonton

MLS® #E4446101

\$94,900

1 Bedroom, 1.00 Bathroom, 614 sqft
Condo / Townhouse on 0.00 Acres

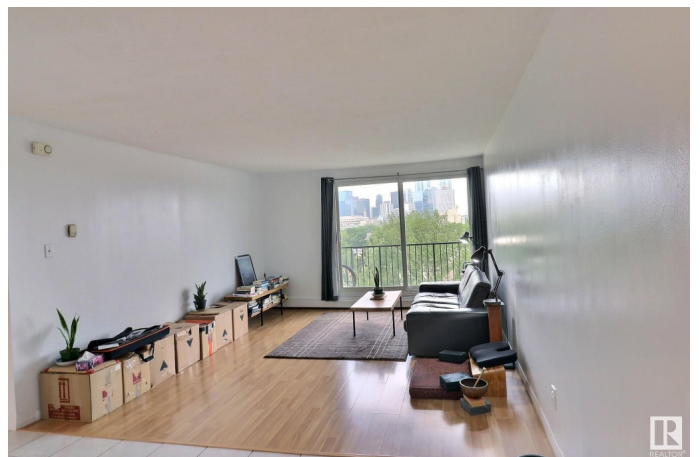
Boyle Street, Edmonton, AB

One Bedroom now available with Fantastic Eighth Floor Downtown & River Valley Views ! Fresh Paint , NEW Bedroom Flooring & NEW Appliances ! Solid , Clean , Quiet , Quality for under a \$100K ! Move -in Ready ! Secure Underground Parking , Heat , Power , and Water all included in the \$579/month condo fee ! Edmonton's Beautiful River Valley Biking & Walking Trails just a few steps from this building's entrance . Some of our City's Finest Dining , Event Venues , & Night Spots only a few blocks away ! WALKABLE , BIKEABLE , LOCATION , LOCATION , LOCATION !

Built in 1971

Essential Information

MLS® #	E4446101
Price	\$94,900
Bedrooms	1
Bathrooms	1.00
Full Baths	1
Square Footage	614
Acres	0.00
Year Built	1971
Type	Condo / Townhouse
Sub-Type	Apartment High Rise
Style	Single Level Apartment
Status	Active



Community Information

Address	805 9028 Jasper Avenue
Area	Edmonton
Subdivision	Boyle Street
City	Edmonton
County	ALBERTA
Province	AB
Postal Code	T5H 3Y6

Amenities

Amenities	No Smoking Home, Parking-Visitor, Secured Parking, Security Door, Vinyl Windows
Parking Spaces	1
Parking	Underground

Interior

Appliances	Hood Fan, Refrigerator, Stove-Electric
Heating	Baseboard, Hot Water, Natural Gas
# of Stories	11
Stories	1
Has Basement	Yes
Basement	See Remarks

Exterior

Exterior	Steel, Brick, Concrete, Stucco
Exterior Features	Golf Nearby, Picnic Area, Public Transportation, River Valley View, Schools, Shopping Nearby, Ski Hill Nearby, View City, View Downtown
Roof	Flat, Tar & Gravel
Construction	Steel, Brick, Concrete, Stucco
Foundation	Concrete Perimeter

Additional Information

Date Listed	July 5th, 2025
Days on Market	9
Zoning	Zone 13
Condo Fee	\$579

DATA IS DEEMED RELIABLE BUT IS NOT GUARANTEED ACCURATE BY THE REALTORS® ASSOCIATION OF EDMONTON. COPYRIGHT 2025 BY THE REALTORS® ASSOCIATION OF EDMONTON. ALL RIGHTS RESERVED. Trademarks are owned or controlled by the Canadian Real Estate Association (CREA) and identify real estate professionals who are members of CREA (REALTOR®, REALTORS®) and/or the quality of services they

provide (MLS® , Multiple Listing Service®)

Listing information last updated on July 14th, 2025 at 2:32am MDT