

## \$450,000 - 4812 115a Street, Edmonton

MLS® #E4443517

**\$450,000**

5 Bedroom, 2.00 Bathroom, 1,143 sqft

Single Family on 0.00 Acres

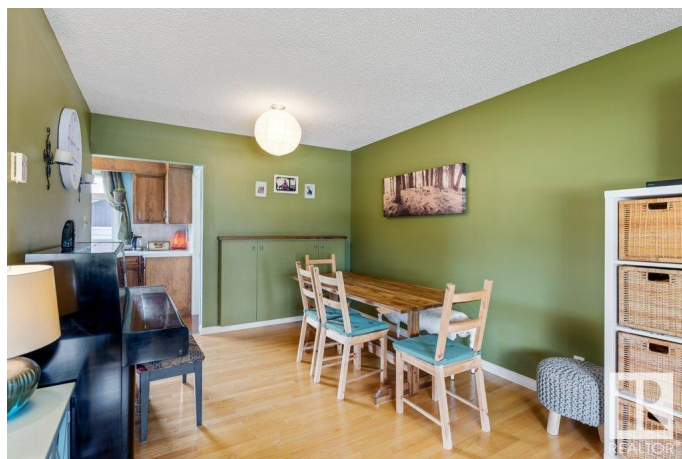
Malmo Plains, Edmonton, AB

This 1143 sq ft bungalow in the desirable community of Malmo Plains offers plenty of potential for families or investors. The main floor features a bright living room filled with natural light, a dining area, and a functional kitchen with warm wood cabinets. Three bedrooms and a 4-piece bath provide comfortable living on the main level. The fully finished basement expands the space with a large family room featuring a wood-burning fireplace, two additional bedrooms, and a 3-piece bath. There is excellent potential to add a secondary suite, making it ideal for rental income or multi-generational living. Outside, enjoy a spacious patio, a large backyard, and a double detached garage. Located close to schools, parks, and all major amenities, this property combines practicality with opportunity. Whether you're looking to live in, rent out, or expand its use, this bungalow offers great flexibility in a well-established neighborhood.

Built in 1964

### Essential Information

MLS® #	E4443517
Price	\$450,000
Bedrooms	5
Bathrooms	2.00



Full Baths	2
Square Footage	1,143
Acres	0.00
Year Built	1964
Type	Single Family
Sub-Type	Detached Single Family
Style	Bungalow
Status	Active

### Community Information

Address	4812 115a Street
Area	Edmonton
Subdivision	Malmo Plains
City	Edmonton
County	ALBERTA
Province	AB
Postal Code	T6H 3P8

### Amenities

Amenities	Patio, See Remarks
Parking	Double Garage Detached

### Interior

Appliances	Dishwasher-Built-In, Dryer, Hood Fan, Refrigerator, Stove-Electric, Washer, Window Coverings
Heating	Forced Air-1, Natural Gas
Fireplace	Yes
Fireplaces	Stone Facing
Stories	2
Has Basement	Yes
Basement	Full, Finished

### Exterior

Exterior	Wood, Stucco, Vinyl
Exterior Features	Fenced, Golf Nearby, Landscaped, Playground Nearby, Private Setting, Public Transportation, Schools, Shopping Nearby, See Remarks
Roof	Asphalt Shingles
Construction	Wood, Stucco, Vinyl
Foundation	Concrete Perimeter

**Additional Information**

Date Listed                June 20th, 2025  
Days on Market        5  
Zoning                    Zone 15

DATA IS DEEMED RELIABLE BUT IS NOT GUARANTEED ACCURATE BY THE REALTORS® ASSOCIATION OF EDMONTON. COPYRIGHT 2025 BY THE REALTORS® ASSOCIATION OF EDMONTON. ALL RIGHTS RESERVED.Trademarks are owned or controlled by the Canadian Real Estate Association (CREA) and identify real estate professionals who are members of CREA (REALTOR®, REALTORS®) and/or the quality of services they provide (MLS®, Multiple Listing Service®)  
Listing information last updated on June 25th, 2025 at 6:32am MDT