

\$310,000 - 506 10142 111 Street, Edmonton

MLS® #E4443246

\$310,000

2 Bedroom, 2.00 Bathroom, 1,058 sqft

Condo / Townhouse on 0.00 Acres

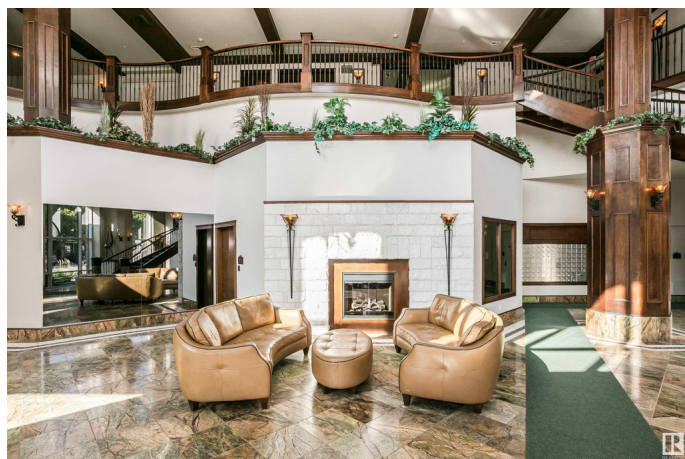
WÃ@hkwÃªntÃ´win, Edmonton, AB

Welcome to executive living at Meridian Plaza. 2 bedroom 2 bath 1058 sqft unit has an open concept floorplan with lots of natural light and is thoughtfully laid out with the living space separating the 2 bedrooms. The primary bedroom has a walk in closet with custom shelving and a 4 piece ensuite. The kitchen has granite, stainless steel appl, lots of storage and an island. The living area has a fireplace and opens onto the west facing balcony. Plus 2 titled assigned parking stalls! The building has a lot of amenities including an atrium, fitness room, owners lounge, guest suite, event centre with kitchen and underground visitor parking. Centrally located and close to shopping, dining, transit and walking trails.

Built in 2009

Essential Information

MLS® #	E4443246
Price	\$310,000
Bedrooms	2
Bathrooms	2.00
Full Baths	2
Square Footage	1,058
Acres	0.00
Year Built	2009



Type	Condo / Townhouse
Sub-Type	Apartment High Rise
Style	Single Level Apartment
Status	Active

Community Information

Address	506 10142 111 Street
Area	Edmonton
Subdivision	WÃ©hkwÃ©ntÃ©win
City	Edmonton
County	ALBERTA
Province	AB
Postal Code	T5K 1K6

Amenities

Amenities	Air Conditioner, Exercise Room, No Animal Home, No Smoking Home, Party Room
Parking	Heated, Parkade, Underground

Interior

Interior Features	ensuite bathroom
Appliances	Dishwasher-Built-In, Hood Fan, Refrigerator, Stacked Washer/Dryer, Stove-Electric, Vacuum System Attachments, Vacuum Systems
Heating	Heat Pump, Natural Gas
Fireplace	Yes
Fireplaces	Mantel, Tile Surround
# of Stories	10
Stories	1
Has Basement	Yes
Basement	None, No Basement

Exterior

Exterior	Concrete, Brick, Stucco
Exterior Features	Golf Nearby, Public Transportation, Schools, Shopping Nearby
Roof	Metal
Construction	Concrete, Brick, Stucco
Foundation	Concrete Perimeter

Additional Information

Date Listed	June 19th, 2025
Days on Market	23
Zoning	Zone 12
Condo Fee	\$726

DATA IS DEEMED RELIABLE BUT IS NOT GUARANTEED ACCURATE BY THE REALTORS® ASSOCIATION OF EDMONTON. COPYRIGHT 2025 BY THE REALTORS® ASSOCIATION OF EDMONTON. ALL RIGHTS RESERVED. Trademarks are owned or controlled by the Canadian Real Estate Association (CREA) and identify real estate professionals who are members of CREA (REALTOR®, REALTORS®) and/or the quality of services they provide (MLS®, Multiple Listing Service®)

Listing information last updated on July 11th, 2025 at 10:17pm MDT