

# \$749,900 - 369 Glenridding Ravine Road, Edmonton

MLS® #E4442784

**\$749,900**

3 Bedroom, 2.50 Bathroom, 2,162 sqft

Single Family on 0.00 Acres

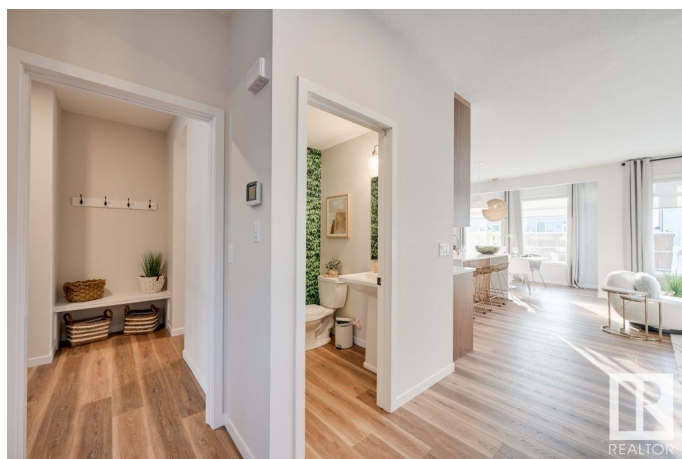
Glenridding Ravine, Edmonton, AB

Welcome to the Family Thrive 26 by award winning Cantiro Homes! This gorgeous home is mindfully crafted and expertly curated for those seeking a flexible and spacious home, from a growing family to entertaining aficionado, the options are wide open. The main floor welcomes you with a carefully designed and open concept layout, the rooms flow into each other for optimal entertaining and family functionality. Upstairs, discover three bedrooms, a cozy bonus room for intimate movie nights, and includes your personal haven – the primary suite. This retreat boasts an oversized walk-in closet and the spacious ensuite with dual sinks for effortless mornings and winding down after a long work day. This single family home includes: Expansive windows for natural light and amazing views, double car front attached garage, rear deck, SIDE ENTRY, fireplace, upgraded appliances, quartz waterfall island, upgraded tile and trim, audio system package.

Built in 2022

## Essential Information

MLS® #	E4442784
Price	\$749,900
Bedrooms	3
Bathrooms	2.50



Full Baths	2
Half Baths	1
Square Footage	2,162
Acres	0.00
Year Built	2022
Type	Single Family
Sub-Type	Detached Single Family
Style	2 Storey
Status	Active

### Community Information

Address	369 Glenridding Ravine Road
Area	Edmonton
Subdivision	Glenridding Ravine
City	Edmonton
County	ALBERTA
Province	AB
Postal Code	T6W 4E6

### Amenities

Amenities	Detectors Smoke, No Animal Home, No Smoking Home
Parking	Double Garage Attached

### Interior

Interior Features	ensuite bathroom
Appliances	Dishwasher-Built-In, Dryer, Refrigerator, Stove-Electric, Washer
Heating	Forced Air-1, Natural Gas
Stories	2
Has Basement	Yes
Basement	Full, Unfinished

### Exterior

Exterior	Wood, Vinyl
Exterior Features	Airport Nearby, Schools, Shopping Nearby
Roof	Asphalt Shingles
Construction	Wood, Vinyl
Foundation	Concrete Perimeter

### Additional Information

Date Listed June 17th, 2025

Days on Market 12

Zoning Zone 56

DATA IS DEEMED RELIABLE BUT IS NOT GUARANTEED ACCURATE BY THE REALTORS® ASSOCIATION OF EDMONTON. COPYRIGHT 2025 BY THE REALTORS® ASSOCIATION OF EDMONTON. ALL RIGHTS RESERVED. Trademarks are owned or controlled by the Canadian Real Estate Association (CREA) and identify real estate professionals who are members of CREA (REALTOR®, REALTORS®) and/or the quality of services they provide (MLS®, Multiple Listing Service®)

Listing information last updated on June 29th, 2025 at 1:02pm MDT