

\$729,900 - 687 Meadowview Drive, Sherwood Park

MLS® #E4442702

\$729,900

3 Bedroom, 2.50 Bathroom, 2,131 sqft

Single Family on 0.00 Acres

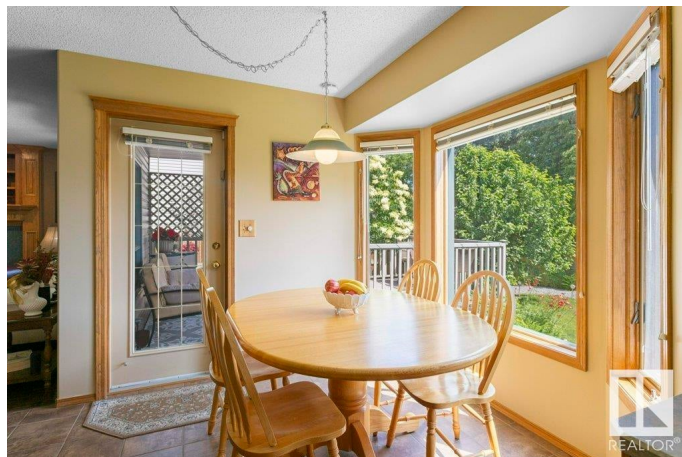
Clarkdale Meadows, Sherwood Park, AB

Are you seeking an impressive two story executive home backing McGhan Park? How about a private gate within of a playground & two tennis/pickleball courts? Walk your dogs here & even skate or play shinny hockey in Winter on the neighbourhood rink! This backyard is full of amazing trees, plants and shrubs: Apple tree, roses, peonies, lilac, Hostas and more. Genuine hardwood flooring covers the living, dining and family room areas. The entry, hallway & mainfloor bathroom flooring has ceramic tile. A v. generous layout and entertainers dream. Large backyard w gorgeous deck partially in shade and part in sun. Two gas fireplaces, one in primary bedroom and other in family room. Terrific entertainers paradise with an almost country club feel in back park area of this home.

Built in 1995

Essential Information

MLS® #	E4442702
Price	\$729,900
Bedrooms	3
Bathrooms	2.50
Full Baths	2
Half Baths	1
Square Footage	2,131



Acres	0.00
Year Built	1995
Type	Single Family
Sub-Type	Detached Single Family
Style	2 Storey
Status	Active

Community Information

Address	687 Meadowview Drive
Area	Sherwood Park
Subdivision	Clarkdale Meadows
City	Sherwood Park
County	ALBERTA
Province	AB
Postal Code	T8H 1X9

Amenities

Amenities	Off Street Parking, On Street Parking, Air Conditioner, Deck, Hot Water Natural Gas, No Animal Home, No Smoking Home, Patio, Tennis Courts
Parking Spaces	4
Parking	Double Garage Attached, Front Drive Access, Parking Pad Cement/Paved

Interior

Interior Features	ensuite bathroom
Appliances	Air Conditioning-Central, Dishwasher-Built-In, Dryer, Garage Control, Garage Opener, Hood Fan, Oven-Microwave, Refrigerator, Storage Shed, Stove-Electric, Washer
Heating	Forced Air-1, Natural Gas
Fireplace	Yes
Fireplaces	Glass Door, Mantel, Oak Surround
Stories	2
Has Basement	Yes
Basement	Full, Unfinished

Exterior

Exterior	Wood, Brick, Vinyl
Exterior Features	Backs Onto Park/Trees, Fenced, Flat Site, Fruit Trees/Shrubs, Landscaped, Level Land, Low Maintenance Landscape, Park/Reserve, Playground Nearby, Recreation Use, Shopping Nearby, See Remarks

Roof	Asphalt Shingles
Construction	Wood, Brick, Vinyl
Foundation	Concrete Perimeter

Additional Information

Date Listed	June 16th, 2025
Days on Market	13
Zoning	Zone 25

DATA IS DEEMED RELIABLE BUT IS NOT GUARANTEED ACCURATE BY THE REALTORS® ASSOCIATION OF EDMONTON. COPYRIGHT 2025 BY THE REALTORS® ASSOCIATION OF EDMONTON. ALL RIGHTS RESERVED.Trademarks are owned or controlled by the Canadian Real Estate Association (CREA) and identify real estate professionals who are members of CREA (REALTOR®, REALTORS®) and/or the quality of services they provide (MLS®, Multiple Listing Service®)

Listing information last updated on June 29th, 2025 at 12:32pm MDT