

# \$120,000 - 401 1624 48 Street, Edmonton

MLS® #E4442474

**\$120,000**

2 Bedroom, 1.00 Bathroom, 872 sqft

Condo / Townhouse on 0.00 Acres

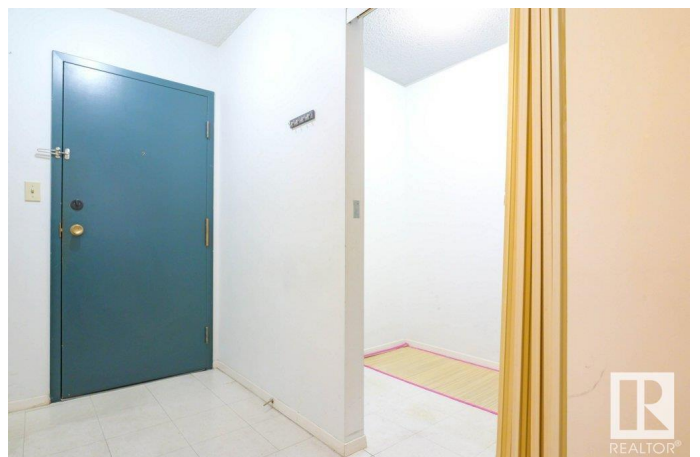
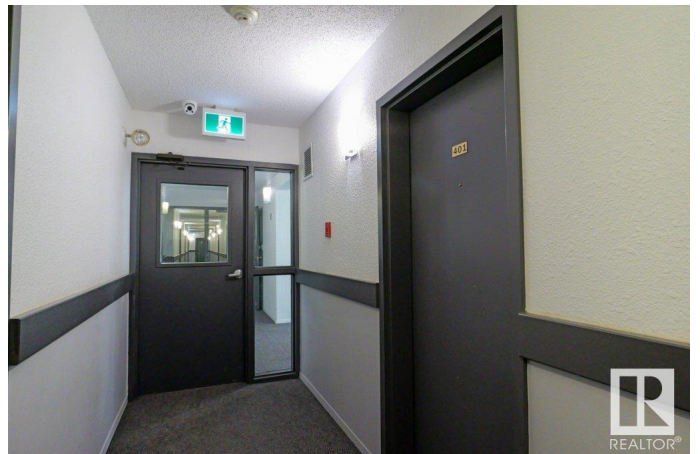
Pollard Meadows, Edmonton, AB

Perfect investment property or first-time home! This top-floor 18+ condo features 2 large bedrooms, including one with a spacious walk-in closet. The open living and dining areas offer plenty of space, and the screened-in deck is perfect for relaxation. The building has an elevator for added convenience. Located just minutes from Millwood's Town Centre, and other shopping and grocery options. This condo includes an extra-long parking spot that fits 2 cars, with transit service nearby and a Gurudwara within walking distance. A fantastic opportunity in a prime location!

Built in 1981

## Essential Information

MLS® #	E4442474
Price	\$120,000
Bedrooms	2
Bathrooms	1.00
Full Baths	1
Square Footage	872
Acres	0.00
Year Built	1981
Type	Condo / Townhouse
Sub-Type	Lowrise Apartment
Style	Single Level Apartment



Status Active

## Community Information

Address 401 1624 48 Street  
Area Edmonton  
Subdivision Pollard Meadows  
City Edmonton  
County ALBERTA  
Province AB  
Postal Code T6L 5P1

## Amenities

Amenities No Animal Home, See Remarks  
Parking Stall

## Interior

Appliances Dishwasher-Built-In, Refrigerator, Stove-Electric  
Heating Baseboard, Natural Gas  
# of Stories 4  
Stories 1  
Has Basement Yes  
Basement None, No Basement

## Exterior

Exterior Wood, Stucco  
Exterior Features Public Transportation, Schools, See Remarks  
Roof Asphalt Shingles  
Construction Wood, Stucco  
Foundation Concrete Perimeter

## Additional Information

Date Listed June 14th, 2025  
Days on Market 73  
Zoning Zone 29  
Condo Fee \$506

DATA IS DEEMED RELIABLE BUT IS NOT GUARANTEED ACCURATE BY THE REALTORS® ASSOCIATION OF EDMONTON. COPYRIGHT 2025 BY THE REALTORS® ASSOCIATION OF EDMONTON. ALL RIGHTS RESERVED. Trademarks are owned or controlled by the Canadian Real Estate Association (CREA) and identify real estate professionals who are members of CREA (REALTOR®, REALTORS®) and/or the quality of services they provide (MLS®, Multiple Listing Service®)

Listing information last updated on August 26th, 2025 at 5:47pm MDT