

\$434,900 - 27 Halladay Boulevard, Spruce Grove

MLS® #E4442189

\$434,900

4 Bedroom, 3.50 Bathroom, 1,657 sqft

Single Family on 0.00 Acres

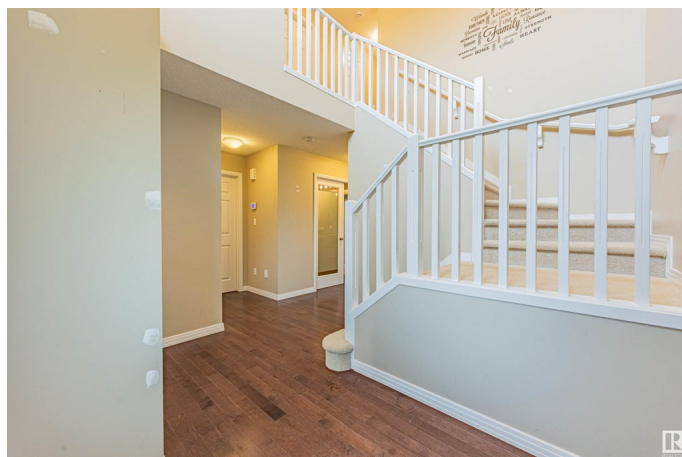
Harvest Ridge, Spruce Grove, AB

Fantastic 1650 sq. ft. 2 storey duplex with double attached garage. Main floor has hardwood floors, office area, chef's kitchen with stainless steel appliances. Upstairs you will find 3 bedrooms with the primary bedroom having a 4 piece ensuite and walk in closet. Basement is fully developed just add your personal touches of flooring. The basement has a additional bedroom and 3 piece bathroom. The backyard is fully landscaped with deck and is fully fenced. Additionally, this lot borders a farmer's field featuring beautiful year round views and walking trails just outside your front door. This home is located within 5-minute walking distance of a playground, a scenic pond walk with walking trails, and two schools (one K-9 school and one high school).

Built in 2014

Essential Information

MLS® #	E4442189
Price	\$434,900
Bedrooms	4
Bathrooms	3.50
Full Baths	3
Half Baths	1
Square Footage	1,657
Acres	0.00



Year Built	2014
Type	Single Family
Sub-Type	Half Duplex
Style	2 Storey
Status	Active

Community Information

Address	27 Halladay Boulevard
Area	Spruce Grove
Subdivision	Harvest Ridge
City	Spruce Grove
County	ALBERTA
Province	AB
Postal Code	T7X 0P5

Amenities

Amenities	See Remarks
Parking	Double Garage Attached

Interior

Interior Features	ensuite bathroom
Appliances	Air Conditioning-Central, Dishwasher-Built-In, Dryer, Garage Opener, Refrigerator, Stove-Electric, Washer, Window Coverings
Heating	Forced Air-1, Natural Gas
Stories	3
Has Basement	Yes
Basement	Full, See Remarks

Exterior

Exterior	Wood, Stone, Vinyl
Exterior Features	See Remarks
Roof	Asphalt Shingles
Construction	Wood, Stone, Vinyl
Foundation	Concrete Perimeter

Additional Information

Date Listed	June 13th, 2025
Days on Market	3
Zoning	Zone 91

DATA IS DEEMED RELIABLE BUT IS NOT GUARANTEED ACCURATE BY THE REALTORS® ASSOCIATION OF EDMONTON. COPYRIGHT 2025 BY THE REALTORS® ASSOCIATION OF EDMONTON. ALL RIGHTS RESERVED.Trademarks are owned or controlled by the Canadian Real Estate Association (CREA) and identify real estate professionals who are members of CREA (REALTOR®, REALTORS®) and/or the quality of services they provide (MLS®, Multiple Listing Service®)

Listing information last updated on June 16th, 2025 at 5:02pm MDT