

Courtesy Of Darya M Pfund Of Easy List Realty

\$775,000 - 5420 Sunview Bay, Sherwood Park

MLS® #E4439890

\$775,000

4 Bedroom, 2.50 Bathroom, 2,493 sqft

Single Family on 0.00 Acres

Summerwood, Sherwood Park, AB

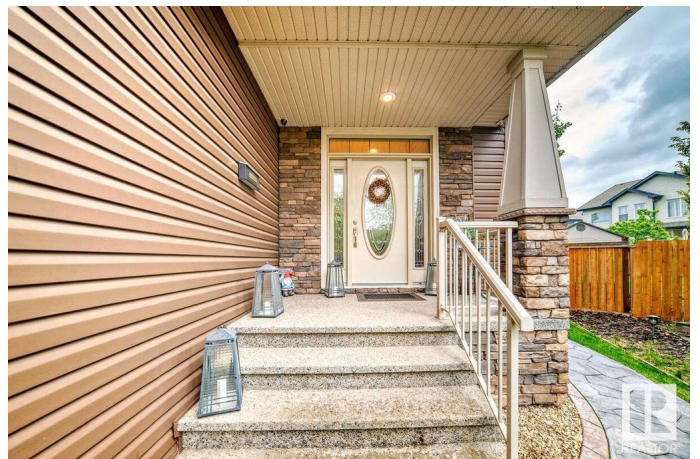
For more information, please click on "View Listing on Realtor Website". This stunning custom built 2-storey home on a pie shaped lot is perfectly situated in a quiet, family-friendly cul-de-sac. Designed with elegance and comfort in mind, this 4-bedroom above ground, 3-bathroom residence showcases rich hardwood flooring and a bright, welcoming foyer that leads into a spacious formal living and dining area. The living room features a beautiful fireplace and expansive windows that fill the space with natural light while offering views of the fully developed backyard. The gourmet kitchen is a dream, complete with granite countertops, stainless steel appliances, a gas stove, large island, and walk-in pantry that connects to the laundry room and attached garage for added convenience. Upstairs, you'll find a luxurious primary suite with a cozy sitting area, walk-in closet, and a spa-inspired ensuite with jetted tub. There are three additional generously sized bedrooms. This home has everything on your list.

Built in 2011

Essential Information

MLS® # E4439890

Price \$775,000



| | |
|----------------|------------------------|
| Bedrooms | 4 |
| Bathrooms | 2.50 |
| Full Baths | 2 |
| Half Baths | 1 |
| Square Footage | 2,493 |
| Acres | 0.00 |
| Year Built | 2011 |
| Type | Single Family |
| Sub-Type | Detached Single Family |
| Style | 2 Storey |
| Status | Active |

Community Information

| | |
|-------------|------------------|
| Address | 5420 Sunview Bay |
| Area | Sherwood Park |
| Subdivision | Summerwood |
| City | Sherwood Park |
| County | ALBERTA |
| Province | AB |
| Postal Code | T8H 0K3 |

Amenities

| | |
|----------------|--|
| Amenities | Air Conditioner, Carbon Monoxide Detectors, Ceiling 9 ft., Deck, No Smoking Home, Smart/Program. Thermostat, Vaulted Ceiling |
| Parking Spaces | 4 |
| Parking | Double Garage Attached, Front Drive Access, Heated, Insulated, Over Sized |

Interior

| | |
|-------------------|--|
| Interior Features | ensuite bathroom |
| Appliances | Air Conditioning-Central, Alarm/Security System, Dishwasher-Built-In, Dryer, Garage Opener, Garburator, Humidifier-Power(Furnace), Refrigerator-Energy Star, Storage Shed, Stove-Electric, Stove-Gas, Vacuum Systems, Washer - Energy Star, Water Softener |
| Heating | Forced Air-2, Natural Gas |
| Fireplace | Yes |
| Fireplaces | Direct Vent, Mantel |
| Stories | 2 |
| Has Basement | Yes |

Basement Partial, Unfinished

Exterior

Exterior Wood, Brick, Vinyl

Exterior Features No Back Lane, Public Transportation, Schools, Treed Lot

Roof Asphalt Shingles

Construction Wood, Brick, Vinyl

Foundation Concrete Perimeter

Additional Information

Date Listed June 2nd, 2025

Days on Market 65

Zoning Zone 25

DATA IS DEEMED RELIABLE BUT IS NOT GUARANTEED ACCURATE BY THE REALTORS® ASSOCIATION OF EDMONTON. COPYRIGHT 2025 BY THE REALTORS® ASSOCIATION OF EDMONTON. ALL RIGHTS RESERVED. Trademarks are owned or controlled by the Canadian Real Estate Association (CREA) and identify real estate professionals who are members of CREA (REALTOR®, REALTORS®) and/or the quality of services they provide (MLS®, Multiple Listing Service®)

Listing information last updated on August 6th, 2025 at 2:47am MDT