

# \$500,000 - 14303 101 Avenue, Edmonton

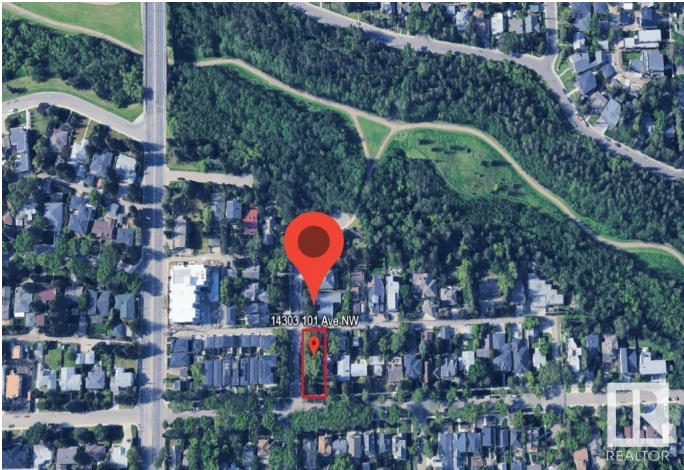
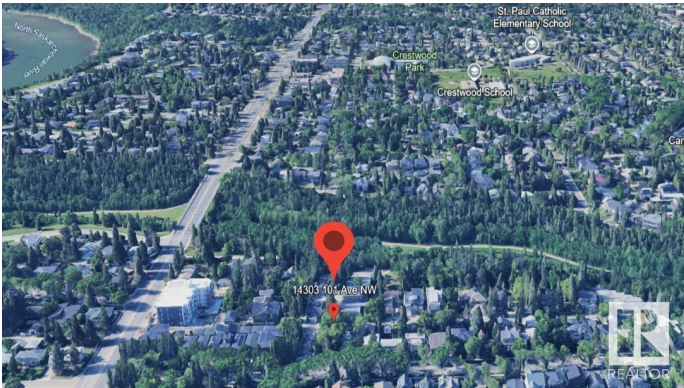
MLS® #E4439572

**\$500,000**

0 Bedroom, 0.00 Bathroom,  
Single Family on 0.00 Acres

Grovenor, Edmonton, AB

Executive Corner Lot in Prestigious Grovenor, just Steps to MacKinnon Ravine & MacKinnon Ravine Park. Stunning new builds and character homes are all around this property with the Valley Line West LRT only 2 blocks away. Measuring 31.5â€™™ x 136â€™™ giving you numerous options and the seller can custom build for you, or you can purchase the lot outright.



## Essential Information

MLS® #	E4439572
Price	\$500,000
Bathrooms	0.00
Acres	0.00
Type	Single Family
Sub-Type	Vacant Lot/Land
Status	Active

## Community Information

Address	14303 101 Avenue
Area	Edmonton
Subdivision	Grovenor
City	Edmonton
County	ALBERTA
Province	AB
Postal Code	T5N 0K7

**Amenities**

Parking                      Parking Pad Cement/Paved, Stall, See Remarks

**Interior**

Heating                      Natural Gas

**Exterior**

Exterior Features      Corner Lot, Level Land, Park/Reserve, Picnic Area, Public Swimming Pool, Public Transportation, Schools, Shopping Nearby

**Additional Information**

Date Listed                May 30th, 2025

Days on Market        68

Zoning                      Zone 21

DATA IS DEEMED RELIABLE BUT IS NOT GUARANTEED ACCURATE BY THE REALTORS® ASSOCIATION OF EDMONTON. COPYRIGHT 2025 BY THE REALTORS® ASSOCIATION OF EDMONTON. ALL RIGHTS RESERVED.Trademarks are owned or controlled by the Canadian Real Estate Association (CREA) and identify real estate professionals who are members of CREA (REALTOR®, REALTORS®) and/or the quality of services they provide (MLS®, Multiple Listing Service®)  
Listing information last updated on August 6th, 2025 at 4:17am MDT