

## \$429,800 - 16329 134 Street, Edmonton

MLS® #E4439185

**\$429,800**

4 Bedroom, 3.50 Bathroom, 1,459 sqft

Single Family on 0.00 Acres

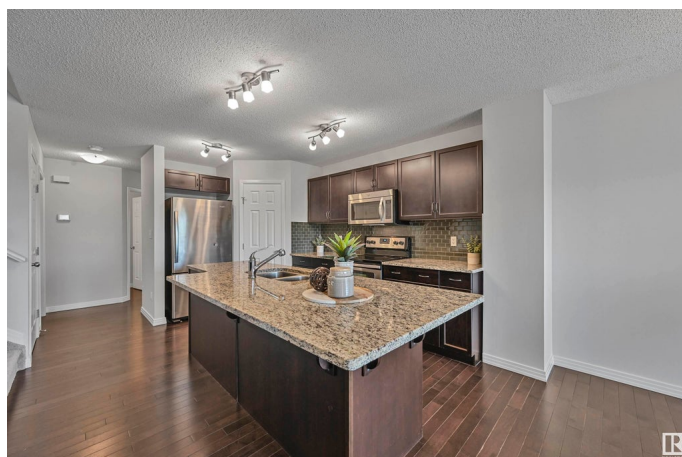
Carlton, Edmonton, AB

Move-in ready duplex BACKING A PARK/LAKE in a thriving community! Perfect for a growing family or investor with nearly 1,500sf above grade PLUS a FULLY FINISHED BASEMENT. Main level boasts open concept living room, with cozy fireplace, dining nook and spacious kitchen. Enjoy granite counters, sizeable pantry for extra storage & stainless steel appliances. Walkout on your raised deck and soak in pond views in time for summer! Upstairs find 3 bedrooms and 2 full bathrooms. Enjoy waking up to sunny, morning pond views from the primary suite. Plus large walk-in closet and ensuite! Fully finished basement offers a second living area/recreation space, 4th bedroom and 3rd full bathroom. Features include fresh paint, newer carpets, main floor laundry and attached/enclosed single garage. Great proximity to shopping, schools, restaurants and major arteries. Plus walking trails at your fingertips. A must see!

Built in 2012

### Essential Information

MLS® #	E4439185
Price	\$429,800
Bedrooms	4
Bathrooms	3.50



Full Baths	3
Half Baths	1
Square Footage	1,459
Acres	0.00
Year Built	2012
Type	Single Family
Sub-Type	Half Duplex
Style	2 Storey
Status	Active

### Community Information

Address	16329 134 Street
Area	Edmonton
Subdivision	Carlton
City	Edmonton
County	ALBERTA
Province	AB
Postal Code	T6V 0G4

### Amenities

Amenities	On Street Parking, Deck, See Remarks
Parking Spaces	2
Parking	Single Garage Attached

### Interior

Interior Features	ensuite bathroom
Appliances	Dishwasher-Built-In, Dryer, Garage Control, Garage Opener, Microwave Hood Fan, Refrigerator, Stove-Electric, Washer
Heating	Forced Air-1, Natural Gas
Fireplace	Yes
Fireplaces	Mantel
Stories	3
Has Basement	Yes
Basement	Full, Finished

### Exterior

Exterior	Wood, Stone, Vinyl
Exterior Features	Backs Onto Park/Trees, Fenced, Landscaped, Schools, Shopping Nearby, See Remarks

Roof	Asphalt Shingles
Construction	Wood, Stone, Vinyl
Foundation	Concrete Perimeter

### School Information

Elementary	St.Lucy/ElizabethFinch
Middle	JohnThompson/ElizabethFinc
High	O'Leary/RossSheppard

### Additional Information

Date Listed	May 29th, 2025
Days on Market	4
Zoning	Zone 27

DATA IS DEEMED RELIABLE BUT IS NOT GUARANTEED ACCURATE BY THE REALTORS® ASSOCIATION OF EDMONTON. COPYRIGHT 2025 BY THE REALTORS® ASSOCIATION OF EDMONTON. ALL RIGHTS RESERVED.Trademarks are owned or controlled by the Canadian Real Estate Association (CREA) and identify real estate professionals who are members of CREA (REALTOR®, REALTORS®) and/or the quality of services they provide (MLS®, Multiple Listing Service®)

Listing information last updated on June 2nd, 2025 at 9:02am MDT