

\$599,900 - 109 Hayward Crescent, Edmonton

MLS® #E4439042

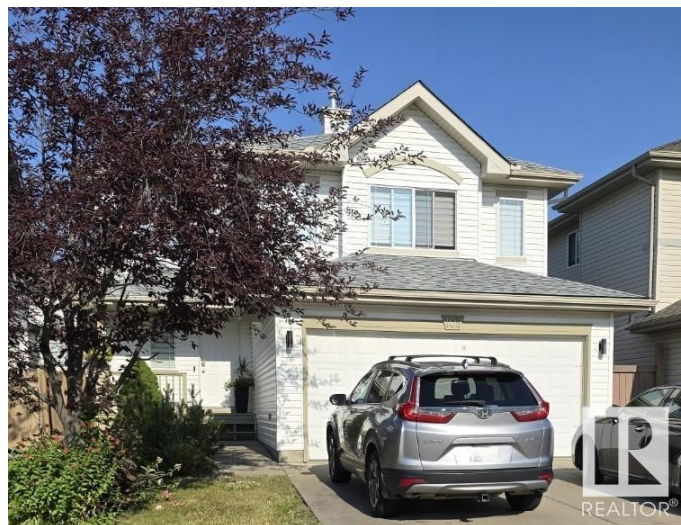
\$599,900

4 Bedroom, 3.50 Bathroom, 1,877 sqft

Single Family on 0.00 Acres

Hodgson, Edmonton, AB

Beautifully upgraded and updated 2 storey home, just under 1900 sqft plus a fully developed basement. This gorgeous home has 3 + 1 bedrooms, 3.5 baths. The main floor is open concept living and has 9 ft ceilings in the spacious living room which also features a tile surround fireplace. The kitchen is perfect, loads of cupboards and granite counter space, stainless steel appliances, huge island and a garden door from the dining area leading out to your nicely landscaped backyard & large deck. There is a huge bonus room on the upper level with big windows bringing in tons of beautiful natural light. The primary bedroom is large enough to accommodate a king size bed, a separate sitting area, along with a full four pce ensuite & spacious walk in closet. Two additional good sized bedrooms, and a full 4 pce bath up. Very flexible options in the fully developed basement for whatever suits your needs. Rec room, bedroom, both? Full bath and walk in closet/storage. Fantastic Crescent location in Hodgson!



Built in 2003

Essential Information

MLS® # E4439042

Price \$599,900

Bedrooms	4
Bathrooms	3.50
Full Baths	3
Half Baths	1
Square Footage	1,877
Acres	0.00
Year Built	2003
Type	Single Family
Sub-Type	Detached Single Family
Style	2 Storey
Status	Active

Community Information

Address	109 Hayward Crescent
Area	Edmonton
Subdivision	Hodgson
City	Edmonton
County	ALBERTA
Province	AB
Postal Code	T6R 3G2

Amenities

Amenities	Ceiling 9 ft., Deck, Front Porch
Parking	Double Garage Attached

Interior

Interior Features	ensuite bathroom
Appliances	Dishwasher-Built-In, Dryer, Garage Control, Garage Opener, Microwave Hood Fan, Refrigerator, Stove-Electric, Washer, Window Coverings
Heating	Forced Air-1, Natural Gas
Stories	3
Has Basement	Yes
Basement	Full, Finished

Exterior

Exterior	Wood, Vinyl
Exterior Features	Fenced, Level Land, Playground Nearby
Roof	Asphalt Shingles
Construction	Wood, Vinyl

Foundation Concrete Perimeter

Additional Information

Date Listed May 28th, 2025
Days on Market 20
Zoning Zone 14
HOA Fees 175
HOA Fees Freq. Annually

DATA IS DEEMED RELIABLE BUT IS NOT GUARANTEED ACCURATE BY THE REALTORS® ASSOCIATION OF EDMONTON. COPYRIGHT 2025 BY THE REALTORS® ASSOCIATION OF EDMONTON. ALL RIGHTS RESERVED.Trademarks are owned or controlled by the Canadian Real Estate Association (CREA) and identify real estate professionals who are members of CREA (REALTOR®, REALTORS®) and/or the quality of services they provide (MLS®, Multiple Listing Service®)
Listing information last updated on June 17th, 2025 at 1:47pm MDT