

# \$419,900 - 6863 Cardinal Link Link, Edmonton

MLS® #E4438672

**\$419,900**

3 Bedroom, 2.50 Bathroom, 1,326 sqft  
Single Family on 0.00 Acres

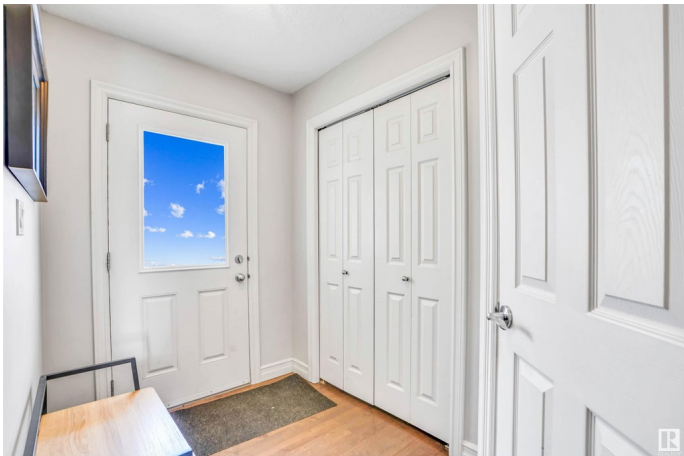
Chappelle Area, Edmonton, AB

Immaculate half duplex in Chappelle, SW Edmonton! This 2-storey home offers over 1300 sqft of living space. It features 3 spacious bedrooms, including a master suite with a walk-in closet and 3pc ensuite. Another full bathroom is upstairs, with a 2pc on the main for guests. The main floor boasts hardwood throughout and a kitchen with a large island and granite countertops. The living room offers plenty of space to relax. The fully finished basement has a large living room, ideal for gatherings. Enjoy the convenience of an attached garage and a large front driveway with ample visitor parking. The massive backyard and back deck are perfect for entertaining or enjoying a quiet coffee. Whether it's your first home, you're downsizing, or seeking an investment, this home truly checks all the boxes!

Built in 2013

## Essential Information

MLS® #	E4438672
Price	\$419,900
Bedrooms	3
Bathrooms	2.50
Full Baths	2
Half Baths	1
Square Footage	1,326



Acres	0.00
Year Built	2013
Type	Single Family
Sub-Type	Half Duplex
Style	2 Storey
Status	Active

### Community Information

Address	6863 Cardinal Link Link
Area	Edmonton
Subdivision	Chappelle Area
City	Edmonton
County	ALBERTA
Province	AB
Postal Code	T6W 1Z1

### Amenities

Amenities	Deck, Detectors Smoke, See Remarks
Parking	Single Garage Attached

### Interior

Interior Features	ensuite bathroom
Appliances	Dishwasher-Built-In, Dryer, Garage Control, Garage Opener, Microwave Hood Fan, Refrigerator, Stove-Electric, Washer, Window Coverings
Heating	Forced Air-1, Natural Gas
Stories	2
Has Basement	Yes
Basement	Full, Partially Finished

### Exterior

Exterior	Wood, Stone, Vinyl
Exterior Features	Back Lane, Fenced, Landscaped, Park/Reserve, Playground Nearby, Public Transportation, Schools, Shopping Nearby, See Remarks
Roof	Asphalt Shingles
Construction	Wood, Stone, Vinyl
Foundation	Concrete Perimeter

### Additional Information

Date Listed	May 27th, 2025
-------------	----------------

Days on Market	21
Zoning	Zone 55
HOA Fees	100
HOA Fees Freq.	Annually

DATA IS DEEMED RELIABLE BUT IS NOT GUARANTEED ACCURATE BY THE REALTORS® ASSOCIATION OF EDMONTON. COPYRIGHT 2025 BY THE REALTORS® ASSOCIATION OF EDMONTON. ALL RIGHTS RESERVED. Trademarks are owned or controlled by the Canadian Real Estate Association (CREA) and identify real estate professionals who are members of CREA (REALTOR®, REALTORS®) and/or the quality of services they provide (MLS®, Multiple Listing Service®)

Listing information last updated on June 17th, 2025 at 4:32am MDT