

Courtesy Of Mina D Gayed Of Mozaic Realty Group

\$439,900 - 7705 24 Avenue, Edmonton

MLS® #E4436556

\$439,900

3 Bedroom, 3.50 Bathroom, 1,453 sqft

Single Family on 0.00 Acres

Summerside, Edmonton, AB

Incredible value in Lake Summerside! This better-than-new, fully finished home offers close to 2,000 sq.ft. of beautifully upgraded living space, 3 large bedrooms, 3.5 baths, & exclusive lake access! Enjoy an open-concept main floor with elegant laminate & tile, timeless white kitchen cabinetry, quartz countertops, corner pantry, & newer stainless-steel appliances. The cozy living room with modern fireplace flows into the dining area, leading to a huge deck and a sunny, private south-facing, fully fenced backyardâ€”perfect for outdoor living. Upstairs, plush newer carpets lead to a spacious primary suite with walk-in closet & full ensuite, plus two more generous bedrooms, full bath, and convenient upper-floor laundry. The professionally finished basement adds a large family/rec room & a full bathâ€”ideal for entertaining or guests. Just steps to Michael Strembitsky School, parks, shopping, & transit. Enjoy exclusive lake access with year-round activitiesâ€”beach, paddle boats, skating, golf, clubhouse & more!!

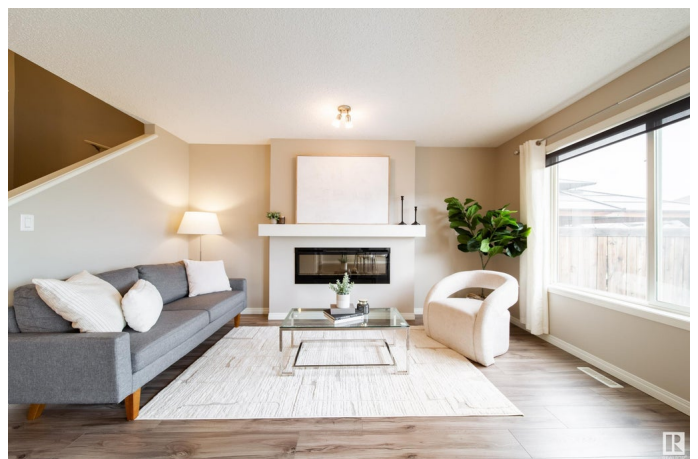
Built in 2012

Essential Information

MLS® # E4436556

Price \$439,900

Bedrooms 3



Bathrooms	3.50
Full Baths	3
Half Baths	1
Square Footage	1,453
Acres	0.00
Year Built	2012
Type	Single Family
Sub-Type	Half Duplex
Style	2 Storey
Status	Active

Community Information

Address	7705 24 Avenue
Area	Edmonton
Subdivision	Summerside
City	Edmonton
County	ALBERTA
Province	AB
Postal Code	T6X 1S6

Amenities

Amenities	Deck, Vinyl Windows
Parking Spaces	2
Parking	Single Garage Attached

Interior

Interior Features	ensuite bathroom
Appliances	Dishwasher-Built-In, Dryer, Garage Control, Garage Opener, Microwave Hood Fan, Refrigerator, Stove-Electric, Washer, Window Coverings
Heating	Forced Air-1, Natural Gas
Fireplace	Yes
Fireplaces	Insert
Stories	3
Has Basement	Yes
Basement	Full, Finished

Exterior

Exterior	Wood, Vinyl
Exterior Features	Airport Nearby, Beach Access, Fenced, Flat Site, Lake Access Property,

Landscaped, Playground Nearby, Private Fishing, Public Transportation, Schools, Shopping Nearby, Private Park Access

Roof	Asphalt Shingles
Construction	Wood, Vinyl
Foundation	Concrete Perimeter

School Information

Elementary	Michael Strembitsky
Middle	Michael Strembitsky
High	J. Percy Page School

Additional Information

Date Listed	May 15th, 2025
Days on Market	17
Zoning	Zone 53
HOA Fees	443.71
HOA Fees Freq.	Annually

DATA IS DEEMED RELIABLE BUT IS NOT GUARANTEED ACCURATE BY THE REALTORS® ASSOCIATION OF EDMONTON. COPYRIGHT 2025 BY THE REALTORS® ASSOCIATION OF EDMONTON. ALL RIGHTS RESERVED. Trademarks are owned or controlled by the Canadian Real Estate Association (CREA) and identify real estate professionals who are members of CREA (REALTOR®, REALTORS®) and/or the quality of services they provide (MLS®, Multiple Listing Service®)

Listing information last updated on June 1st, 2025 at 6:47pm MDT