

# \$450,000 - 17 Eton Link, Spruce Grove

MLS® #E4435982

**\$450,000**

3 Bedroom, 2.50 Bathroom, 1,434 sqft  
Single Family on 0.00 Acres

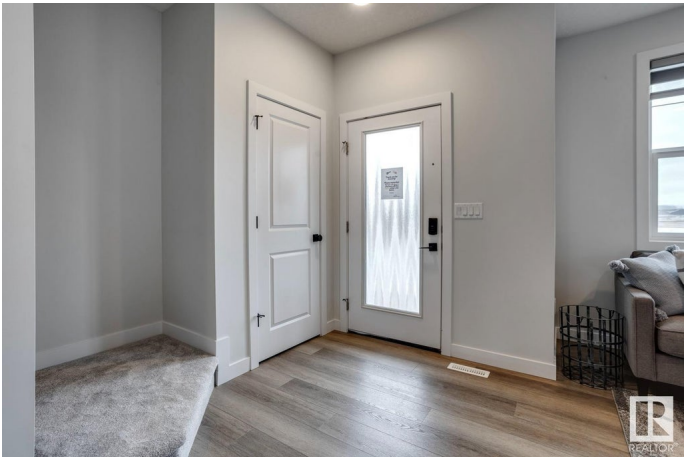
Easton, Spruce Grove, AB

Welcome to this beautifully designed 2-storey new build featuring modern style and smart functionality. The main floor offers a bright open-concept layout with a cozy electric fireplace in the living room, a spacious dining area, and a stylish kitchen complete with a pantry, island, and breakfast bar. A convenient mud room, 2pc bath, and separate side entrance add to the appeal. Upstairs, the primary bedroom features a walk-in closet and 4pc ensuite, while two additional bedrooms share another full 4pc bath. The upper-floor laundry adds everyday convenience to this fantastic home. A perfect blend of comfort and potential - ready for your next chapter. \*Photos are representative\*

Built in 2025

## Essential Information

MLS® #	E4435982
Price	\$450,000
Bedrooms	3
Bathrooms	2.50
Full Baths	2
Half Baths	1
Square Footage	1,434
Acres	0.00
Year Built	2025



Type	Single Family
Sub-Type	Detached Single Family
Style	2 Storey
Status	Active

### Community Information

Address	17 Eton Link
Area	Spruce Grove
Subdivision	Easton
City	Spruce Grove
County	ALBERTA
Province	AB
Postal Code	T7X 4B7

### Amenities

Amenities	No Animal Home, No Smoking Home, Vinyl Windows
Parking	Parking Pad Cement/Paved

### Interior

Interior Features	ensuite bathroom
Appliances	Dishwasher-Built-In, Microwave Hood Fan, Refrigerator, Stove-Electric
Heating	Forced Air-1, Natural Gas
Fireplace	Yes
Fireplaces	Insert
Stories	2
Has Basement	Yes
Basement	Full, Unfinished

### Exterior

Exterior	Wood, Vinyl
Exterior Features	Park/Reserve, Playground Nearby, Schools, Shopping Nearby
Roof	Asphalt Shingles
Construction	Wood, Vinyl
Foundation	Concrete Perimeter

### Additional Information

Date Listed	May 12th, 2025
Days on Market	11
Zoning	Zone 91

DATA IS DEEMED RELIABLE BUT IS NOT GUARANTEED ACCURATE BY THE REALTORS® ASSOCIATION OF EDMONTON. COPYRIGHT 2025 BY THE REALTORS® ASSOCIATION OF EDMONTON. ALL RIGHTS RESERVED. Trademarks are owned or controlled by the Canadian Real Estate Association (CREA) and identify real estate professionals who are members of CREA (REALTOR®, REALTORS®) and/or the quality of services they provide (MLS®, Multiple Listing Service®)

Listing information last updated on May 23rd, 2025 at 8:47am MDT