

\$524,900 - 24 Carlyle Crescent, Sherwood Park

MLS® #E4435449

\$524,900

4 Bedroom, 2.50 Bathroom, 1,765 sqft

Single Family on 0.00 Acres

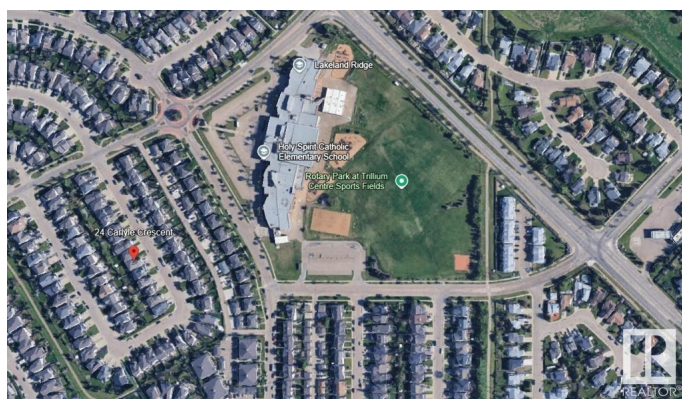
Lakeland Ridge, Sherwood Park, AB

This immaculate 2-storey home offers 2432 sq ft of living space with 4 bedrooms (3 up, 1 down), 3 bathrooms & A/C. A warm neutral palette & cozy fireplace make the living room inviting, flowing into the dining area & kitchen with rich maple cabinets and a raised eating bar. Upstairs features a spacious bonus room & 3 generous sized bedrooms, including a king-sized primary with 4pc ensuite (soaker tub & shower) & walk-in closet. The fully finished basement includes a large bedroom, family/recreation room & rough-in for a bathroom. Newer shingles, hot water tank, A/C, deck, window blinds. New flooring on main level & garage opener (2024). The backyard and deck are ideal for entertaining, play or relaxing. Located near the Trillium Centre & walking distance to schools. Close to all amenities! MOVE-IN READY!

Built in 2005

Essential Information

MLS® #	E4435449
Price	\$524,900
Bedrooms	4
Bathrooms	2.50
Full Baths	2
Half Baths	1
Square Footage	1,765



Acres	0.00
Year Built	2005
Type	Single Family
Sub-Type	Detached Single Family
Style	2 Storey
Status	Active

Community Information

Address	24 Carlyle Crescent
Area	Sherwood Park
Subdivision	Lakeland Ridge
City	Sherwood Park
County	ALBERTA
Province	AB
Postal Code	T8H 2T6

Amenities

Amenities	Air Conditioner, Deck, No Animal Home, No Smoking Home
Parking Spaces	4
Parking	Double Garage Attached, Over Sized

Interior

Interior Features	ensuite bathroom
Appliances	Air Conditioning-Central, Dishwasher-Built-In, Dryer, Garage Control, Garage Opener, Hood Fan, Oven-Microwave, Storage Shed, Stove-Electric, Washer, Window Coverings, Refrigerators-Two
Heating	Forced Air-1, Natural Gas
Fireplace	Yes
Fireplaces	Mantel, Tile Surround
Stories	3
Has Basement	Yes
Basement	Full, Finished

Exterior

Exterior	Wood, Vinyl
Exterior Features	Fenced, Flat Site, Landscaped, Playground Nearby, Public Transportation, Schools, Shopping Nearby
Roof	Asphalt Shingles
Construction	Wood, Vinyl

Foundation Concrete Perimeter

School Information

Elementary Lakeland Ridge
Middle Lakeland Ridge
High Salisbury Composite

Additional Information

Date Listed May 9th, 2025
Days on Market 5
Zoning Zone 25

DATA IS DEEMED RELIABLE BUT IS NOT GUARANTEED ACCURATE BY THE REALTORS® ASSOCIATION OF EDMONTON. COPYRIGHT 2025 BY THE REALTORS® ASSOCIATION OF EDMONTON. ALL RIGHTS RESERVED.Trademarks are owned or controlled by the Canadian Real Estate Association (CREA) and identify real estate professionals who are members of CREA (REALTOR®, REALTORS®) and/or the quality of services they provide (MLS®, Multiple Listing Service®)
Listing information last updated on May 14th, 2025 at 7:32pm MDT