

## \$829,000 - 30 Sydwyck Circle, Spruce Grove

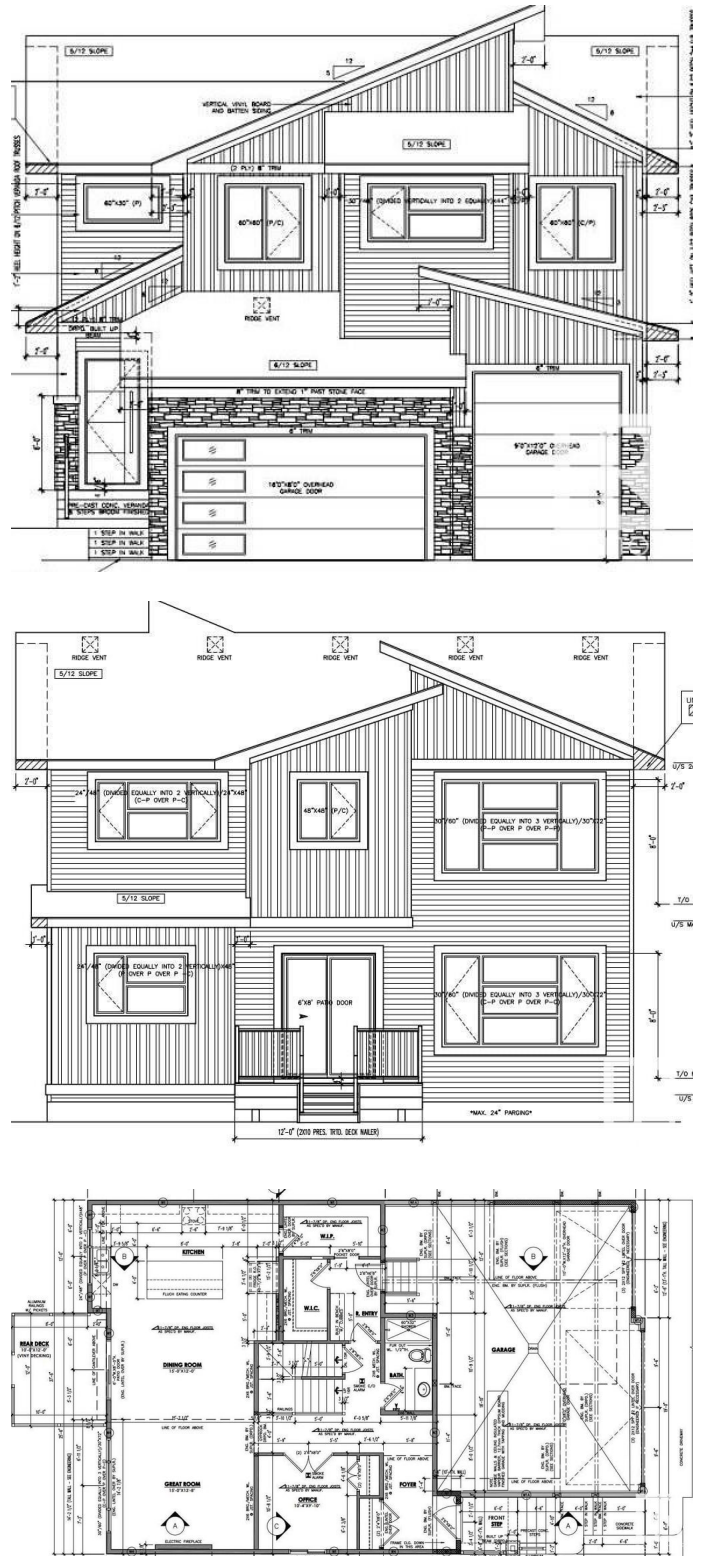
**\$829,000**

# Fenwyck, Spruce Grove, AB

Built in 2025

## Essential Information

MLS® #	E4434452
Price	\$829,000



Bedrooms	5
Bathrooms	3.00
Full Baths	3
Square Footage	2,704
Acres	0.00
Year Built	2025
Type	Single Family
Sub-Type	Detached Single Family
Style	2 Storey
Status	Active

### Community Information

Address	30 Sydwyck Circle
Area	Spruce Grove
Subdivision	Fenwyck
City	Spruce Grove
County	ALBERTA
Province	AB
Postal Code	T7X 0A0

### Amenities

Amenities	Ceiling 9 ft., 9 ft. Basement Ceiling
Parking	Triple Garage Attached

### Interior

Interior Features	ensuite bathroom
Appliances	Hood Fan
Heating	Forced Air-1, Natural Gas
Stories	2
Has Basement	Yes
Basement	Full, Unfinished

### Exterior

Exterior	Wood, Stone, Vinyl
Exterior Features	Golf Nearby, No Through Road, Shopping Nearby
Roof	Asphalt Shingles
Construction	Wood, Stone, Vinyl
Foundation	Concrete Perimeter

### Additional Information

Date Listed May 4th, 2025

Days on Market 91

Zoning Zone 91

DATA IS DEEMED RELIABLE BUT IS NOT GUARANTEED ACCURATE BY THE REALTORS® ASSOCIATION OF EDMONTON. COPYRIGHT 2025 BY THE REALTORS® ASSOCIATION OF EDMONTON. ALL RIGHTS RESERVED. Trademarks are owned or controlled by the Canadian Real Estate Association (CREA) and identify real estate professionals who are members of CREA (REALTOR®, REALTORS®) and/or the quality of services they provide (MLS®, Multiple Listing Service®)

Listing information last updated on August 3rd, 2025 at 9:02am MDT