

\$719,000 - 32 Riviere Terrace, St. Albert

MLS® #E4434249

\$719,000

4 Bedroom, 3.00 Bathroom, 1,303 sqft

Single Family on 0.00 Acres

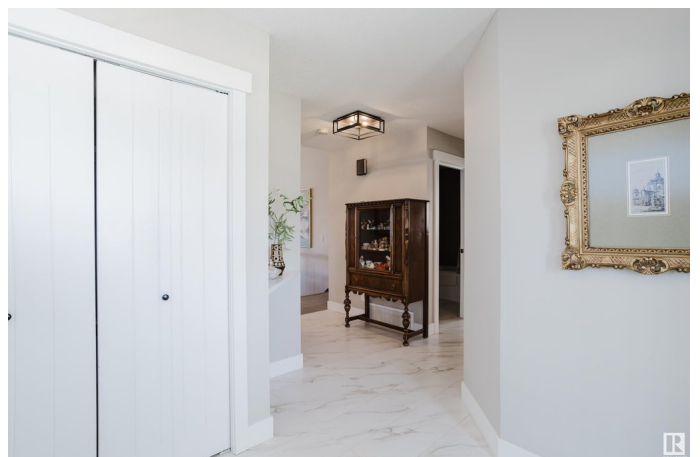
Riverside (St. Albert), St. Albert, AB

In Riverside where peace is found,?This bungalowâ€™s charm will sure astound.?Two beds up and two below,?A finished basement steals the show! Three full baths with style and grace,?One with a tubâ€™your own spa space.?Vaulted ceilings, bold and bright, Fill the rooms with airy light. A cozy fire with just one spark,?The gas-lit glow will warm the dark.?A kitchen built to wow the crowd,?With pot tap high and space allowed. A large back deck where you can dine,?Tall trees behind for a private time.?A double garage, attached with pride,?And a driveway wide with room to slideâ€™?Even your fifth wheel fits with grace,?Thereâ€™s space for all at this fine place. Just down the road, the storeâ€™s in sight,?Grab what you needâ€™day or night!

Built in 2018

Essential Information

MLS® #	E4434249
Price	\$719,000
Bedrooms	4
Bathrooms	3.00
Full Baths	3
Square Footage	1,303
Acres	0.00
Year Built	2018



Type	Single Family
Sub-Type	Detached Single Family
Style	Bungalow
Status	Active

Community Information

Address	32 Riviere Terrace
Area	St. Albert
Subdivision	Riverside (St. Albert)
City	St. Albert
County	ALBERTA
Province	AB
Postal Code	T8N 7N9

Amenities

Amenities	Deck, Detectors Smoke, No Animal Home, No Smoking Home, Vaulted Ceiling, Vinyl Windows, Vacuum System-Roughed-In, HRV System, Natural Gas BBQ Hookup
Parking Spaces	4
Parking	Double Garage Attached, Front Drive Access, Insulated

Interior

Interior Features	ensuite bathroom
Appliances	Dishwasher-Built-In, Dryer, Garage Opener, Microwave Hood Fan, Refrigerator, Stove-Electric, Vacuum System Attachments, Vacuum Systems, Washer, Window Coverings
Heating	Forced Air-1, Natural Gas
Fireplace	Yes
Fireplaces	Heatilator/Fan, Tile Surround
Stories	2
Has Basement	Yes
Basement	Full, Finished

Exterior

Exterior	Wood, Stone, Vinyl
Exterior Features	Fenced, Fruit Trees/Shrubs, Landscaped, No Back Lane, Playground Nearby, Public Transportation
Roof	Asphalt Shingles
Construction	Wood, Stone, Vinyl
Foundation	Concrete Perimeter

Additional Information

Date Listed May 2nd, 2025
Days on Market 30
Zoning Zone 24

DATA IS DEEMED RELIABLE BUT IS NOT GUARANTEED ACCURATE BY THE REALTORS® ASSOCIATION OF EDMONTON. COPYRIGHT 2025 BY THE REALTORS® ASSOCIATION OF EDMONTON. ALL RIGHTS RESERVED.Trademarks are owned or controlled by the Canadian Real Estate Association (CREA) and identify real estate professionals who are members of CREA (REALTOR®, REALTORS®) and/or the quality of services they provide (MLS®, Multiple Listing Service®)
Listing information last updated on June 1st, 2025 at 12:32pm MDT