

\$1,200,000 - 1615 Haswell Court, Edmonton

MLS® #E4432673

\$1,200,000

7 Bedroom, 5.50 Bathroom, 4,105 sqft

Single Family on 0.00 Acres

Haddow, Edmonton, AB

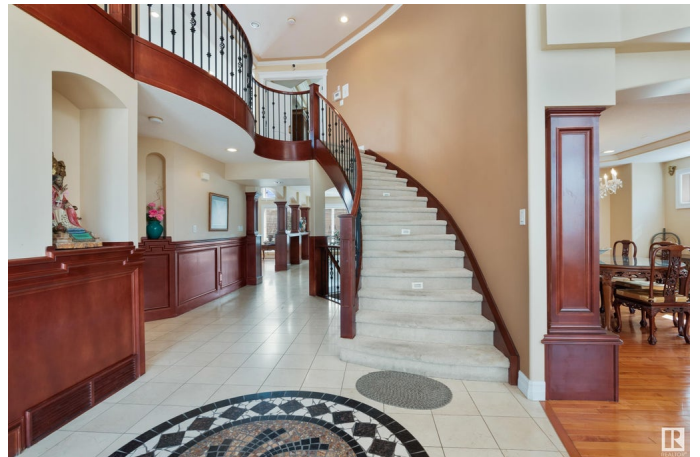
Welcome to 1615 Haswell Court NW! This fantastic home has a total of 7 bedrooms and 5 full bathrooms & a half bath. Great floor plan and size! Can be generational home! It has over 6K sq ft of living space, TRIPLE GARAGE + driveway to park 6+ cars., separate entrances to the FULLY FINISHED WALKOUT basement, backing on walking path, easy access to Anthony Henday, minutes to the EIAirport & more! You will be impressed as soon as you walk in the grande foyer with the stairs to the 2nd level. Living room (with cathedral ceiling + floor to ceiling windows) which is open to the dining room. There is a bedroom & a full bathroom+ laundry area on this main level. A chef's kitchen (plus spice kitchen) has a breakfast nook with access to the deck. Very bright & spacious Family room with built-in shelves & GAS Fireplace complete the main level. Upstairs: Primary bedroom has its big walk-in closet + 5 pc ensuite, 2 bedrooms with a full bath, 4th BR a private veranda + ensuite. 2 more bedrms in the basement.

Built in 2004

Essential Information

MLS® # E4432673

Price \$1,200,000



Bedrooms	7
Bathrooms	5.50
Full Baths	5
Half Baths	1
Square Footage	4,105
Acres	0.00
Year Built	2004
Type	Single Family
Sub-Type	Detached Single Family
Style	2 Storey
Status	Active

Community Information

Address	1615 Haswell Court
Area	Edmonton
Subdivision	Haddow
City	Edmonton
County	ALBERTA
Province	AB
Postal Code	T6R 3C2

Amenities

Amenities	Walkout Basement
Parking Spaces	10
Parking	Triple Garage Attached

Interior

Interior Features	ensuite bathroom
Appliances	Dishwasher-Built-In, Dryer, Garage Opener, Oven-Built-In, Stove-Electric, Stove-Gas, Washer, Refrigerators-Two
Heating	Forced Air-2, Natural Gas
Fireplace	Yes
Fireplaces	Mantel
Stories	3
Has Basement	Yes
Basement	Full, Finished

Exterior

Exterior	Wood, Stucco
----------	--------------

Exterior Features	Park/Reserve, Public Transportation, Schools, Shopping Nearby
Roof	Asphalt Shingles
Construction	Wood, Stucco
Foundation	Concrete Perimeter

Additional Information

Date Listed	April 24th, 2025
Days on Market	8
Zoning	Zone 14

DATA IS DEEMED RELIABLE BUT IS NOT GUARANTEED ACCURATE BY THE REALTORS® ASSOCIATION OF EDMONTON. COPYRIGHT 2025 BY THE REALTORS® ASSOCIATION OF EDMONTON. ALL RIGHTS RESERVED.Trademarks are owned or controlled by the Canadian Real Estate Association (CREA) and identify real estate professionals who are members of CREA (REALTOR®, REALTORS®) and/or the quality of services they provide (MLS®, Multiple Listing Service®)

Listing information last updated on May 2nd, 2025 at 4:32am MDT