

\$197,500 - 201 151 Edwards Drive, Edmonton

MLS® #E4429906

\$197,500

3 Bedroom, 2.00 Bathroom, 1,076 sqft
Condo / Townhouse on 0.00 Acres

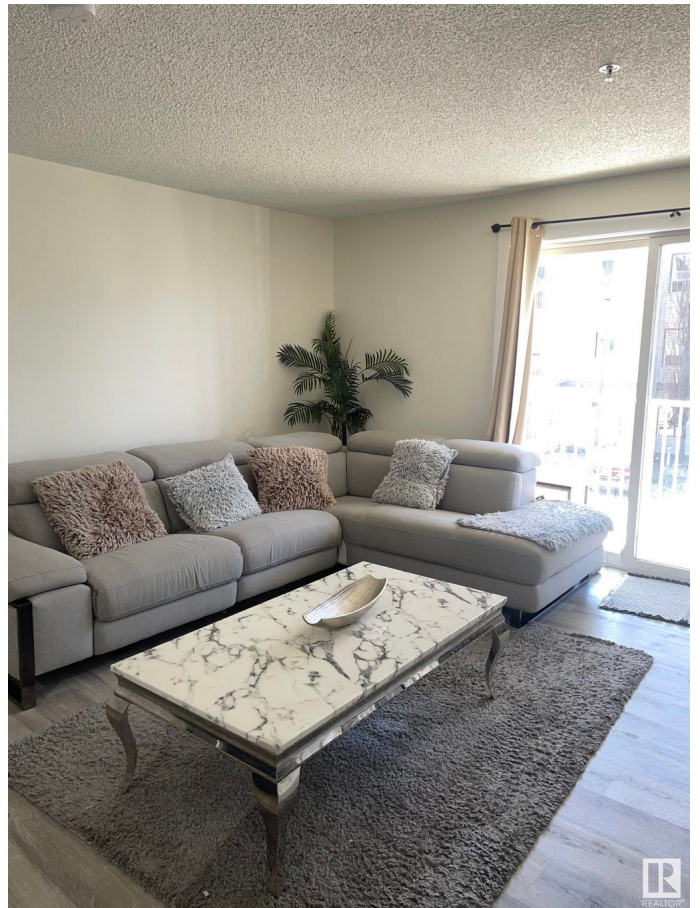
Ellerslie, Edmonton, AB

SUPER RARE 3 BDRM CORNER UNIT with over 1000 sqft. This unit has been completely renovated. Its bright and open with primary off living room with ensuite and walk thru closet. In suite laundry plus two additional perfectly sized bedrooms - one with big corner windows!! In between there's a generous 4 piece bathroom. Tenant would be happy to stay if an investment property is what you're after. This complex is close to schools, pet friendly with b/a there's also a gym to enjoy and a little park area near by plus heat and water included. Come check it out!

Built in 2005

Essential Information

| | |
|----------------|------------------------|
| MLS® # | E4429906 |
| Price | \$197,500 |
| Bedrooms | 3 |
| Bathrooms | 2.00 |
| Full Baths | 2 |
| Square Footage | 1,076 |
| Acres | 0.00 |
| Year Built | 2005 |
| Type | Condo / Townhouse |
| Sub-Type | Lowrise Apartment |
| Style | Single Level Apartment |
| Status | Active |



Community Information

| | |
|-------------|-----------------------|
| Address | 201 151 Edwards Drive |
| Area | Edmonton |
| Subdivision | Ellerslie |
| City | Edmonton |
| County | ALBERTA |
| Province | AB |
| Postal Code | T6X 1N5 |

Amenities

| | |
|-----------|--|
| Amenities | On Street Parking, Closet Organizers, Detectors Smoke, Exercise Room, Intercom, No Animal Home, No Smoking Home, Parking-Visitor, Security Door, Vinyl Windows |
| Parking | Stall |

Interior

| | |
|-------------------|---|
| Interior Features | ensuite bathroom |
| Appliances | Dishwasher-Built-In, Hood Fan, Refrigerator, Stacked Washer/Dryer, Stove-Electric |
| Heating | Baseboard, Hot Water, Natural Gas |
| # of Stories | 3 |
| Stories | 1 |
| Has Basement | Yes |
| Basement | None, No Basement |

Exterior

| | |
|-------------------|---|
| Exterior | Wood, Stone, Vinyl |
| Exterior Features | Airport Nearby, Fenced, Low Maintenance Landscape, Schools, Shopping Nearby |
| Roof | Asphalt Shingles |
| Construction | Wood, Stone, Vinyl |
| Foundation | Concrete Perimeter |

Additional Information

| | |
|----------------|-----------------|
| Date Listed | April 9th, 2025 |
| Days on Market | 23 |
| Zoning | Zone 53 |
| Condo Fee | \$677 |

DATA IS DEEMED RELIABLE BUT IS NOT GUARANTEED ACCURATE BY THE REALTORS® ASSOCIATION OF EDMONTON. COPYRIGHT 2025 BY THE REALTORS® ASSOCIATION OF EDMONTON. ALL RIGHTS

RESERVED.Trademarks are owned or controlled by the Canadian Real Estate Association (CREA) and identify real estate professionals who are members of CREA (REALTOR®, REALTORS®) and/or the quality of services they provide (MLS®, Multiple Listing Service®)

Listing information last updated on May 2nd, 2025 at 4:02am MDT