

## \$510,000 - N/A, Sherwood Park

MLS® #E4423783

**\$510,000**

3 Bedroom, 2.00 Bathroom, 1,696 sqft

Single Family on 0.00 Acres

Glen Allan, Sherwood Park, AB

\*Please note\* property is sold "as is where is" at time of possession. No warranties or representations.

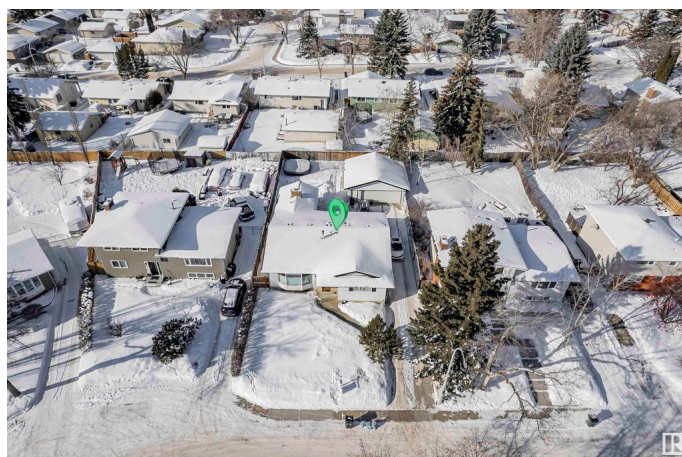
Built in 1972

### Essential Information

|                |                        |
|----------------|------------------------|
| MLS® #         | E4423783               |
| Price          | \$510,000              |
| Bedrooms       | 3                      |
| Bathrooms      | 2.00                   |
| Full Baths     | 2                      |
| Square Footage | 1,696                  |
| Acres          | 0.00                   |
| Year Built     | 1972                   |
| Type           | Single Family          |
| Sub-Type       | Detached Single Family |
| Style          | Bungalow               |
| Status         | Active                 |

### Community Information

|             |               |
|-------------|---------------|
| Address     | N/A           |
| Area        | Sherwood Park |
| Subdivision | Glen Allan    |
| City        | Sherwood Park |
| County      | ALBERTA       |
| Province    | AB            |
| Postal Code | T8A 3A1       |



## Amenities

|           |                        |
|-----------|------------------------|
| Amenities | Deck                   |
| Parking   | Double Garage Detached |

## Interior

|                   |                           |
|-------------------|---------------------------|
| Interior Features | ensuite bathroom          |
| Appliances        | See Remarks               |
| Heating           | Forced Air-2, Natural Gas |
| Stories           | 1                         |
| Has Basement      | Yes                       |
| Basement          | Full, Partially Finished  |

## Exterior

|                   |  |
|-------------------|--|
| Exterior          | Wood, Vinyl  |
| Exterior Features | Fenced, Landscaped, Playground Nearby, Shopping Nearby |
| Roof              | Asphalt Shingles                                       |
| Construction      | Wood, Vinyl  |
| Foundation        | Concrete Perimeter                                     |

## Additional Information

|                |                 |
|----------------|-----------------|
| Date Listed    | March 3rd, 2025 |
| Days on Market | 61              |
| Zoning         | Zone 25         |

DATA IS DEEMED RELIABLE BUT IS NOT GUARANTEED ACCURATE BY THE REALTORS® ASSOCIATION OF EDMONTON. COPYRIGHT 2025 BY THE REALTORS® ASSOCIATION OF EDMONTON. ALL RIGHTS RESERVED. Trademarks are owned or controlled by the Canadian Real Estate Association (CREA) and identify real estate professionals who are members of CREA (REALTOR®, REALTORS®) and/or the quality of services they provide (MLS®, Multiple Listing Service®)

Listing information last updated on May 3rd, 2025 at 7:17am MDT