

# \$849,990 - 29 Darby Crescent, Spruce Grove

MLS® #E4422233

**\$849,990**

4 Bedroom, 2.50 Bathroom, 2,573 sqft  
Single Family on 0.00 Acres

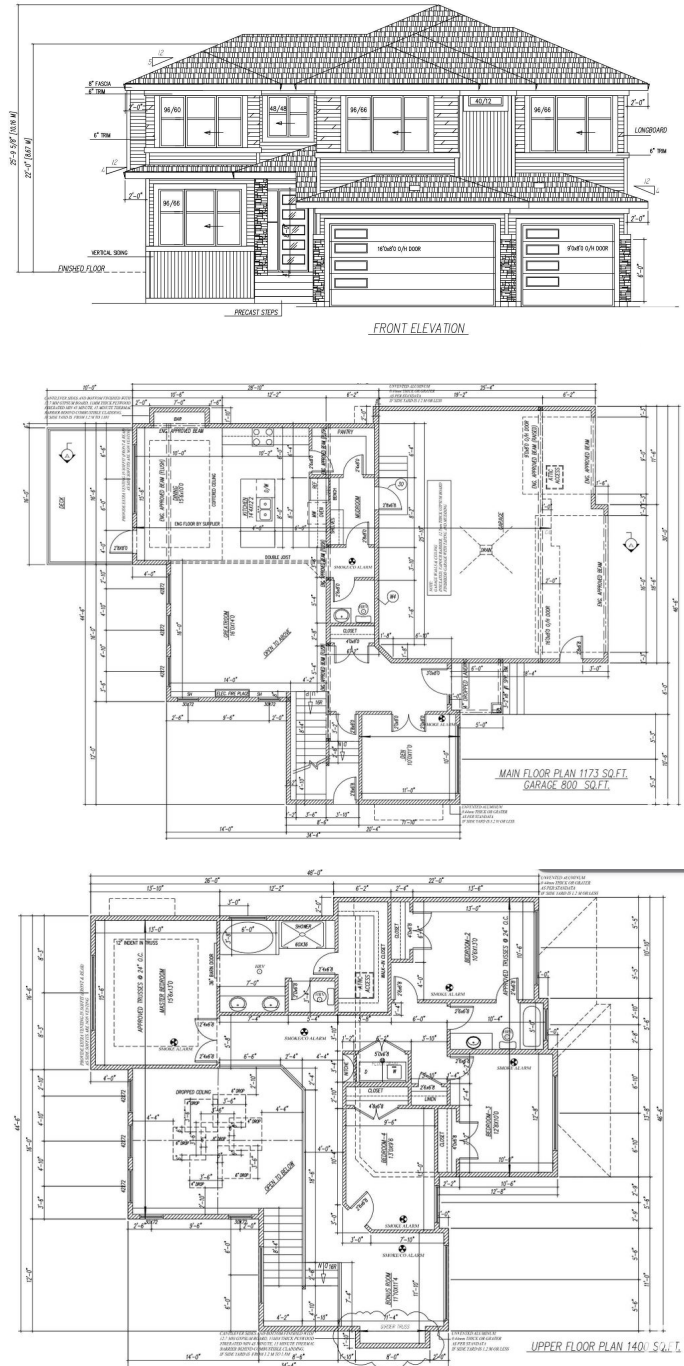
Deer Park\_SPGR, Spruce Grove, AB

Located in Deer Park Estates and custom built by Sunnyview Homes, this immaculate property is situated on a 46 pocket lot.. Open to below living room with a feature wall and electric fireplace. The custom kitchen has ceiling height cabinets with an oversized central island and a waterfall quartz counter top, extended nook and a walk through pantry with plenty of storage space. A Den and a 2-piece powder room complete this floor. Upstairs the spacious primary bedroom is complete with a spa-like 5 piece ensuite and walk-in closet. The upper floor also features a 3 bedrooms, a bonus room, and a 3-piece bathroom. The 3-car attached garage with drainage offers comfort and convenience. The basement has a separate side entrance. Finished with big windows, premium lighting, MDF shelving, and feature walls, coffered ceilings, gas line, this house is a must see!  
\*Pictures are from a similar home constructed by the same builder. Actual finishes may vary.

Built in 2025

## Essential Information

|           |           |
|-----------|-----------|
| MLS® #    | E4422233  |
| Price     | \$849,990 |
| Bedrooms  | 4         |
| Bathrooms | 2.50      |



|                |                        |
|----------------|------------------------|
| Full Baths     | 2                      |
| Half Baths     | 1                      |
| Square Footage | 2,573                  |
| Acres          | 0.00                   |
| Year Built     | 2025                   |
| Type           | Single Family          |
| Sub-Type       | Detached Single Family |
| Style          | 2 Storey               |
| Status         | Active                 |

### Community Information

|             |                   |
|-------------|-------------------|
| Address     | 29 Darby Crescent |
| Area        | Spruce Grove      |
| Subdivision | Deer Park_SPGR    |
| City        | Spruce Grove      |
| County      | ALBERTA           |
| Province    | AB                |
| Postal Code | T7X 0E6           |

### Amenities

|           |  |
|-----------|--|
| Amenities | Ceiling 10 ft., Ceiling 9 ft., Closet Organizers |
| Parking   | Double Garage Attached, Triple Garage Attached   |

### Interior

|                   |   |
|-------------------|---|
| Interior Features | ensuite bathroom                        |
| Appliances        | Garage Control, Garage Opener, Hood Fan |
| Heating           | Forced Air-1, Natural Gas               |
| Stories           | 2                                       |
| Has Basement      | Yes                                     |
| Basement          | Full, Unfinished                        |

### Exterior

|                   |   |
|-------------------|---|
| Exterior          | Wood, Vinyl   |
| Exterior Features | Airport Nearby, Cul-De-Sac, Golf Nearby, Schools, Shopping Nearby |
| Roof              | Asphalt Shingles  |
| Construction      | Wood, Vinyl   |
| Foundation        | Concrete Perimeter  |

### Additional Information

Date Listed February 20th, 2025

Days on Market 71

Zoning Zone 91

DATA IS DEEMED RELIABLE BUT IS NOT GUARANTEED ACCURATE BY THE REALTORS® ASSOCIATION OF EDMONTON. COPYRIGHT 2025 BY THE REALTORS® ASSOCIATION OF EDMONTON. ALL RIGHTS RESERVED. Trademarks are owned or controlled by the Canadian Real Estate Association (CREA) and identify real estate professionals who are members of CREA (REALTOR®, REALTORS®) and/or the quality of services they provide (MLS®, Multiple Listing Service®)

Listing information last updated on May 2nd, 2025 at 5:47am MDT